

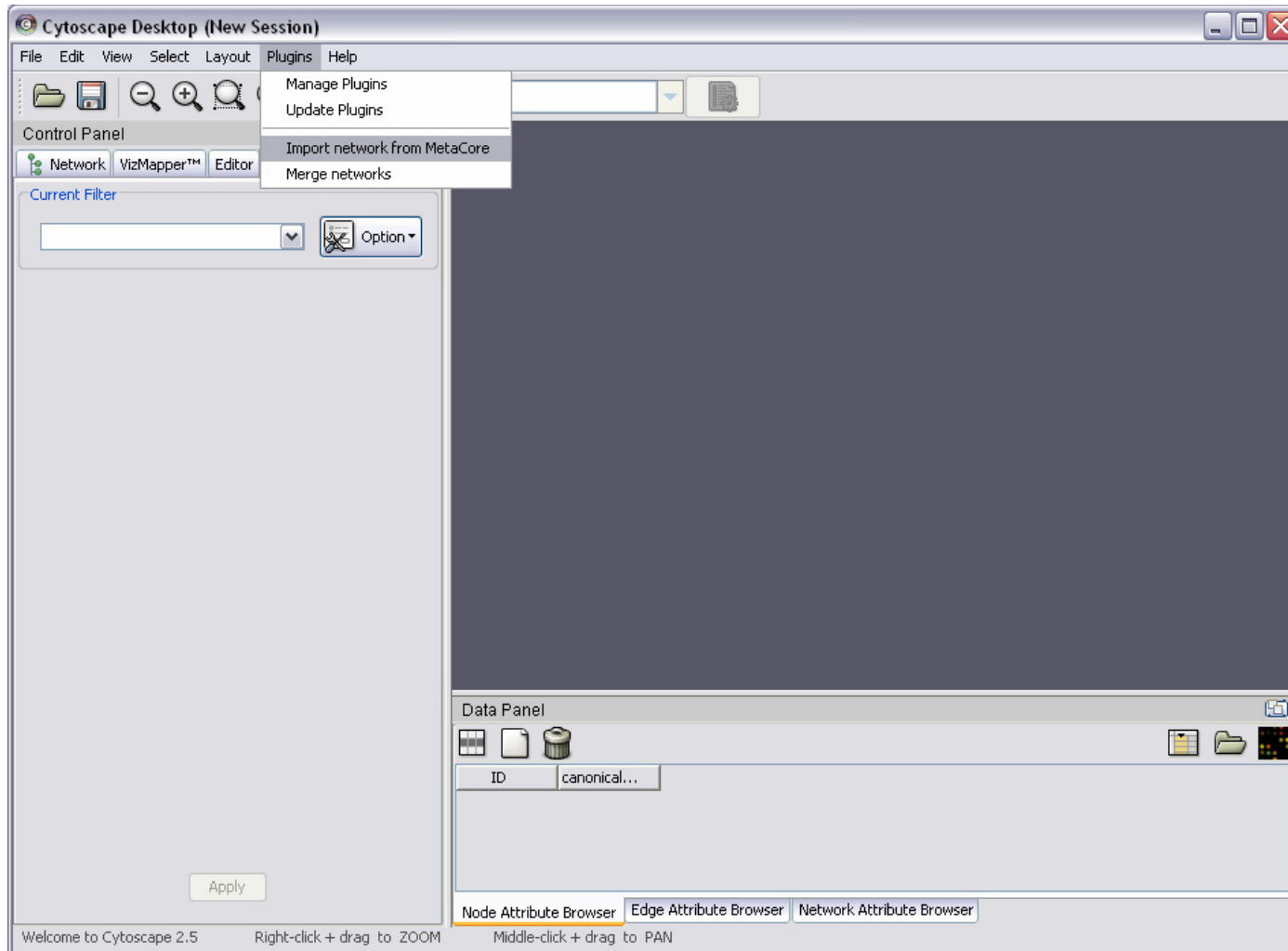


SYSTEMS BIOLOGY FOR DRUG DISCOVERY

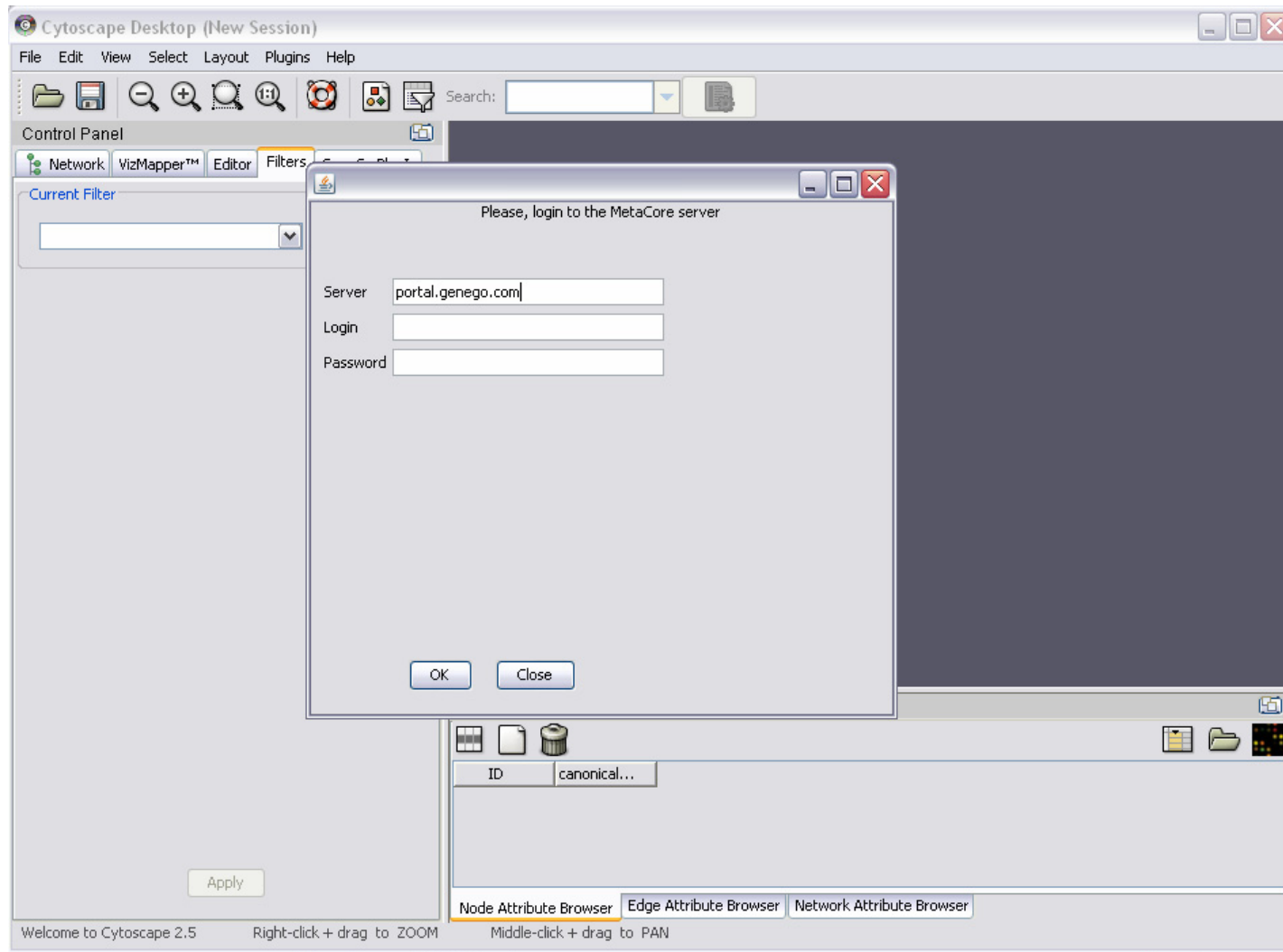
- **1. Download** <http://ftp.genego.com/dist/CytoscapeNetPlugin.jar>
- **2. Place the CytoscapeNetPlugin.jar file in the 'plugins' folder within the Cytoscape installation directory. For example, C:\Program Files\Cytoscape_v2.5.1\plugins.**
- **3. Open Cytoscape**
- **4. The integration function is then accessible from the 'Plugins' menu in Cytoscape (see below).**
- **5. NOTE: When sending content to Cytoscape, the plugin will occupy a MetaCore license seat. The user will need to log out of MetaCore to release the seat for another user to use.**



- **Select Import network from MetaCore from the Plugins menu**



- You need to specify MetaCore server name, your login and password here



- **Select network from your stored networks list**

Cytoscape Desktop (New Session)

File Edit View Select Layout Plugins Help

Control Panel

Network VizMapper™ Editor Filters

Current Filter

List of available networks:

Num	Name	Type	Date
1	RAR-beta/RXR-a...	NW	18-DEC-07 05.2...
2	RXRA, IGF-1 rec...	NW	18-DEC-07 05.2...
3	my saved nw	NW	18-DEC-07 02.2...
4	my saved ns	NT	18-DEC-07 09.2...
5	SP1, c-Jun, c-Fo...	NW	20-NOV-07 04.4...
6	rosane net	NW	10-OCT-07 02.1...
7	rosane net	NT	10-OCT-07 10.1...
8	microRNA_network	NW	04-SEP-07 06.21...
9	Akiva_Parra_Sch...	NW	29-AUG-07 11.4...
10	BMP_loc2_nw	NW	29-AUG-07 11.2...
11	BMP_loc_nw	NW	29-AUG-07 11.2...
12	Akiva_Parra_Sch...	NT	29-AUG-07 07.4...
13	BMP_loc_ns	NT	29-AUG-07 07.2...
14	resolution network	NW	28-JUN-07 04.29...
15	NF-kB, p53, c-M...	NW	11-JUN-07 01.05...
16	Btk, SP1, Lyn, S...	NW	16-MAY-07 01.1...

OK Close

ID canonical...

Node Attribute Browser Edge Attribute Browser Network Attribute Browser

Welcome to Cytoscape 2.5 Right-click + drag to ZOOM Middle-click + drag to PAN



- Selected network will appear in Cytoscape

Cytoscape Desktop (New Session)

File Edit View Select Layout Plugins Help

Search:

Control Panel

Network VizMapper™ Editor Filters GeneGo Plugin

Node Details Edge Details Group Actions

Pathway
RXRA, IGF-1 receptor

Type
RGS

Node info
Object **SOS**:
Homo sapiens protein class SOS
Mus musculus protein class SOS
Rattus norvegicus protein class SOS
Son of sevenless homolog 1 (Drosophila)

GeneGo: 738
[gene.go_link](#)

RXRA, IGF-1 receptor

ATP + phosphatidylinositol 4,5-bisphosphate → ADP + phosphatidylinositol 3,4,5-trisphosphate

PtdIns(3,4,5)P3

PDK (PDFK1)

Akt(PKB)

BAD

Bcl-XL

NRIF3

RXRA

Data Panel

ID	canonicalName
738	SOS

Node Attribute Browser Edge Attribute Browser Network Attribute Browser

Welcome to Cytoscape 2.5 Right-click + drag to ZOOM Middle-click + drag to PAN



- More details for the selected node appear in the Node Details tab of the GeneGo Plugin tab. Click 'genego link' to open the MetaCore details page for the selected node

Cytoscape Desktop (New Session)

File Edit View Select Layout Plugins Help

Control Panel

Network VizMapper™ Editor Filters GeneGo Plugin

Node Details Edge Details Group Actions

Pathway
RXRA, IGF-1 receptor

Type
binding_protein

Node info
Object **GRB2**:
Homo sapiens protein Growth factor receptor-bound protein 2
Mus musculus protein Growth factor receptor-bound protein 2
Rattus norvegicus protein Growth factor receptor-bound protein 2

GeneGo:336
[genego.link](#)

RXRA, IGF-1 receptor

ATP + phosphatidylinositol 4,5-bisphosphate → ADP + phosphatidylinositol 3,4,5-trisphosphate

Network diagram showing interactions between nodes: IGF-1 receptor, IRS-1, PI3K reg class IA, PI3K cat class IA, H-Ras, SOS, Shc, PtdIns(3,4,5)P3, PDK (PDK1), AKT(PKB), BAD, Bcl-XL, NRIF3, and RXRA.

Data Panel

ID	canonicalName
336	GRB2

Node Attribute Browser Edge Attribute Browser Network Attribute Browser

Welcome to Cytoscape 2.5 Right-click + drag to ZOOM Middle-click + drag to PAN

- More details for the selected edge appear in the Edge Details tab of the GeneGo Plugin tab. Click 'genego link' to open the MetaCore details page for the selected edge

Cytoscape Desktop (New Session)

File Edit View Select Layout Plugins Help

Search: []

Control Panel

Network VizMapper™ Editor Filters GeneGo Plugin

Node Details Edge Details Group Actions

Pathway
RXRA, IGF-1 receptor

Edge info

Link: GRB2 -> SOS
Effect: activation
Mechanism: binding
Source: curated

Link: GRB2 -> SOS
Effect: activation
Mechanism: binding
Source: curated

Link: GRB2 -> SOS
Effect: activation
Mechanism: binding
Source: curated

Link: GRB2 -> SOS
Effect: activation
Mechanism: binding
Source: curated

Link: GRB2 -> SOS
Effect: activation
Mechanism: binding
Source: curated

GeneGo: B24
[genego link](#)

ATP + phosphatidylinositol 4,5-bisphosphate = ADP + phosphatidylinositol 3,4,5-trisphosphate

Shc IGF-1 receptor IRS-1 PI3K reg class IA PI3K cat class IA H-Ras PtdIns(3,4,5)P3 PDK1 (PDFK1) AKT(PKB) BAD Bcl-XL NRIF3 RXRA

Data Panel

ID	canonicalName

Node Attribute Browser | Edge Attribute Browser | Network Attribute Browser

Welcome to Cytoscape 2.5 Right-click + drag to ZOOM Middle-click + drag to PAN